

# Cassette 840x840

## 2 Tubos



RM12F  
Control recomendado

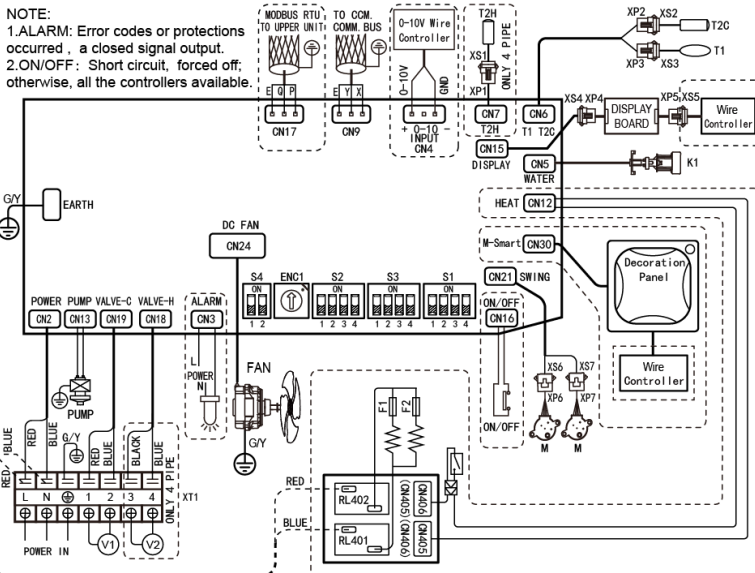
Producto certificado por:



## CARACTERÍSTICAS

Modelo	MKA-V600R (V2)	MKA-V950R (V2)	MKA-V1500R (V2)
Capacidad frigorífica bj./al.	4,40 / 5,93 kW	5,60 / 6,91 kW	7,48 / 10,70 kW
Capacidad calorífica bj./al.	5,32 / 6,06 kW	6,59 / 7,61 kW	7,74 / 8,98 kW
Consumo bj./al.	20 / 41 W	34 / 75 W	41 / 137 W
Caudal de aire bj./me./al.	768/987/1.175 m <sup>3</sup> /h	1.101/1.224/1.581 m <sup>3</sup> /h	1.198/1.415/1.871 m <sup>3</sup> /h
Caudal agua frío al.	0,76 / 1,02 m <sup>3</sup> /h	0,96 / 1,19 m <sup>3</sup> /h	1,29 / 1,93 m <sup>3</sup> /h
Pérdida carga frí bj./al.	13,60 / 23,80 kPa	14,10 / 22,00 kPa	16,40 / 36,60 kPa
Pérdida carga calor bj./al.	19,90 / 25,90 kPa	17,40 / 28,10 kPa	23,30 / 49,20 kPa
Conexiones hidráulicas frío/calor	Ø3/4"	Ø3/4"	Ø3/4"
Alimentación	220-240 V / 1 / 50 Hz		
Cableado alimentación	(2+T)x2,50 mm <sup>2</sup>		

## ESQUEMA CONEXIONES



Terminal	Description
S1-1	2 pipe(default)
S1-2	4 pipe
S1-3	Without enforcement to turn wind(default)
S1-4	With enforcement to turn wind
S2-1	Normal anti-cold wind(default)
S2-2	High temperature anti-cold wind
S2-3	Turn on E-heater and heating valve (default)
S2-4	Turn on E-heater, turn off heating valve
S2-12	Temp compensation value is 0 under cool mode(default)
S2-13	Temp compensation value is 1 under cool mode
S2-14	Temp compensation value is 2 under cool mode
S2-21	Temp compensation value is 0 under heat mode
S2-22	Temp compensation value is 1 under heat mode
S2-23	Temp compensation value is 2 under heat mode
S2-31	Temp compensation value is 0 under heat mode
S2-32	Temp compensation value is 1 under heat mode
S2-33	Temp compensation value is 2 under heat mode

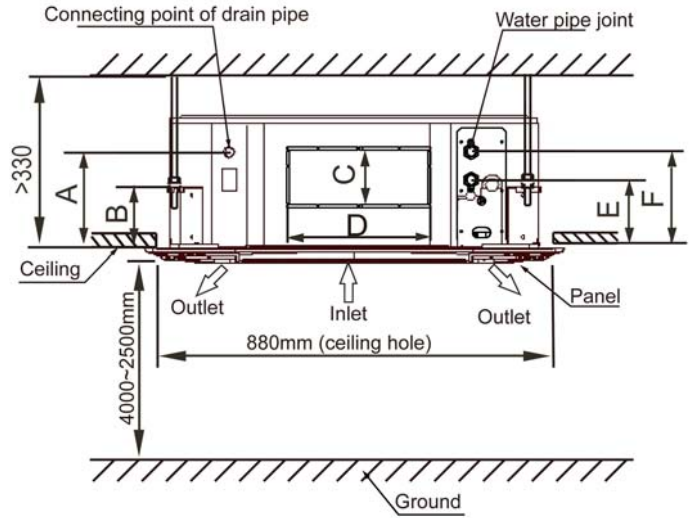
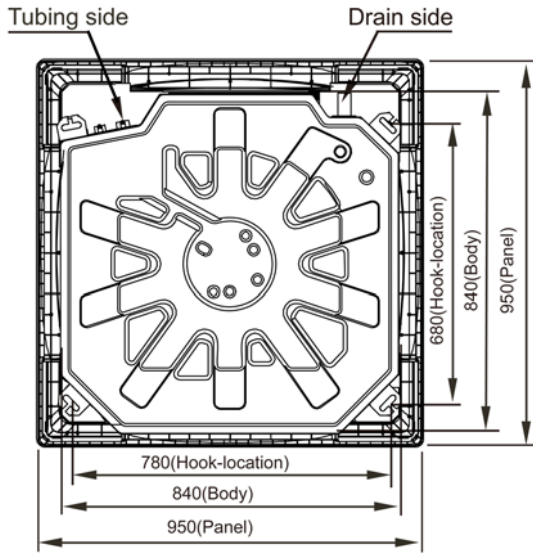
CODE	DESCRIPTION
CN1-30	P.C BOARD SOCKET
K1	WATER LEVEL SWITCH
DC FAN	INDOOR DC FAN MOTOR
M	SWING MOTOR
PUMP	PUMP MOTOR
T1	ROOM TEMPERATURE
T2C/T2H	PIPE TEMPERATURE
XP1-7	CONNECTORS
XS1-7	CONNECTORS
XT1	7-WAY TERMINAL

SWITCH FOR ADDRESS SETTING	Address	Model
0-F of the ENC1 and 'ON/OFF' of the S4, the different position represents a different address to be combined 64 address(0-63)	0-15	MKA-V600R
	16-31	MKA-V750R
	32-47	MKA-V850R
	48-63	MKA-V950R
		MKA-V1200R
		MKA-V1500R

Power supply is grounded Control board is grounded

NOTAS:  
(1) Los datos y especificaciones presentes en esta ficha pueden variar sin previo aviso.  
(2) Las imágenes de esta ficha son de carácter orientativo, pudiendo ser diferentes a la máquina final.

## DIMENSIONES Y PESO



Modelo	A (mm)	B (mm)	C (mm)	D (mm)	E (mm)	F (mm)	Peso (kg)
MKA-V600R (V2)	180	140	85	350	145	195	23
MKA-V950R (V2)	180	140	155	350	155	205	27
MKA-V1500R (V2)	180	140	155	350	155	205	29,50

## DIMENSIONES Y PESO PANEL

Modelo	Ancho	Alto	Fondo	Peso
T-MBQ4-01E(S)	950 mm	55 mm	950 mm	6 kg